

# Your Partner

Michels Overview

**MICHELS**<sup>®</sup>

An Energy & Infrastructure Contractor

# Our Core Values



## Integrity

---

Our actions are characterized by integrity, trust and respect.



## Sustainable Operations

---

We have sustainable and profitable operations driven by our ability to execute swift decisions.



## Dedication

---

Our people are dedicated, innovative and hardworking.



## Safety & Environment

---

We take pride in our reputation for quality work performed safely and with care for our environment.



## Teamwork

---

We are committed to teamwork.

# Who We Are



Founded in 1959 as a family owned and operated business



More than 40 permanent offices and yards



Licensed in all 50 states with operations in Canada



More than 8,000 employees



14,000 pieces of equipment  
25 million in marine assets



Financial strength (revenue > \$3B in 2020)



# Markets Served

ALTERNATIVE DELIVERY



COMMUNICATIONS



CONSTRUCTION MATERIALS



FEDERAL



FOUNDATIONS



GAS DISTRIBUTION



PIPELINES & FACILITIES



POWER DELIVERY



RAILWAY WORK



RENEWABLE ENERGY



SEWER & WATER



TRANSPORTATION



TRENCHLESS



# ENR – Top 400





# MICHEL'S®

## OFFICE LOCATIONS

### UNITED STATES

- |                   |                        |
|-------------------|------------------------|
| Elk Grove, CA     | Perrysburg, OH         |
| Rio Vista, CA     | Springfield, OH        |
| San Diego, CA     | Redmond, OR            |
| Santa Clara, CA   | Salem, OR              |
| South Windsor, CT | Harrisburg, PA         |
| Watertown, CT     | Washington, PA         |
| Kapolei, HI       | Houston, TX            |
| Bedford Park, IL  | Kent, WA               |
| Montgomery, IL    | Kirkland, WA           |
| Indianapolis, IN  | Marysville, WA         |
| Cedar Rapids, IA  | Pasco, WA              |
| Topeka, KS        | Port Orchard, WA       |
| Brooklyn Park, MN | Tumwater, WA           |
| Lakeville, MN     | <b>Brownsville, WI</b> |
| Rogers, MN        | Franksville, WI        |
| Carrollton, MO    | Green Bay, WI          |
| Missoula, MT      | Milwaukee, WI          |
| Pembroke, NH      | Neenah, WI             |
| East Syracuse, NY | New Berlin, WI         |
| New Rochelle, NY  | Wausau, WI             |
| Independence, OH  |                        |

### CANADA

- Edmonton, AB
- Toronto, ON
- Vancouver, BC



We ask all our people to make a promise to their families and co-workers to **STOP** or not perform any work or action that is or may be unsafe, whether on the job or in their personal lives.



**ADSC**

**SAFETY AWARD  
WINNER**

**2020**



# Environmental

Reduce our overall percentage of landfill waste through single stream recycling program

Reduce our fleet idling time by additional 3%

Work toward a 20% energy reduction over 10 years

Expand single stream recycling program to reduce the percentage of waste that goes in landfills

Study electric waste recycling

Implement site specific stormwater best management practices (BMPs) to improve stormwater runoff



Green  
Masters  
Program



GREEN TIER

# Sustainability Initiatives



## Wisconsin Green Tier Company

- Formal Environmental Management System (EMS) for Corporate Support Facility
- Continuous Environmental Improvements
  - Fleet Upgrades to EPA engine Tier 4
  - Comprehensive Idling Reduction Program
  - Energy Surveys and Reduction Goals
  - Water Minimization
  - Recycling Improvements and Waste Minimization Efforts
  - 30 percent Solar Tenant at Wisconsin solar farm



## Wisconsin Sustainable Business Council Green Masters Certification

- Green Professional Status for Construction Segment



# Sustainability Committee

Promotes Sustainability companywide

Community Improvement Projects

Community and Employee Engagement

- Highway litter cleanup
- Erosion control stone donation
- Farm runoff improvement
- Park and stream litter cleanup
- Employee Education



# Capabilities Marine

- Dredging – mechanical and hydraulic
- Gate installation and repair
- Intakes
- Certified commercial diving
- Inspections and debris removal
- Cofferdams
- Lock and dam repair
- Scour and erosion repair
- Island building
- Shoreline restoration
- USACE-approved provider of riprap and armor stone for shoreline protection and restoration
- Hydrographic surveys



## CAPABILITIES FOUNDATIONS

### Techniques include:

- Augercast Piles
- Drilled Shafts (bell/rock sockets)
- Driven Piles
- Secant Piles
- Helical Piers
- Micropiles
- O-Cell testing

# I-74 Mississippi River Bridge - Illinois



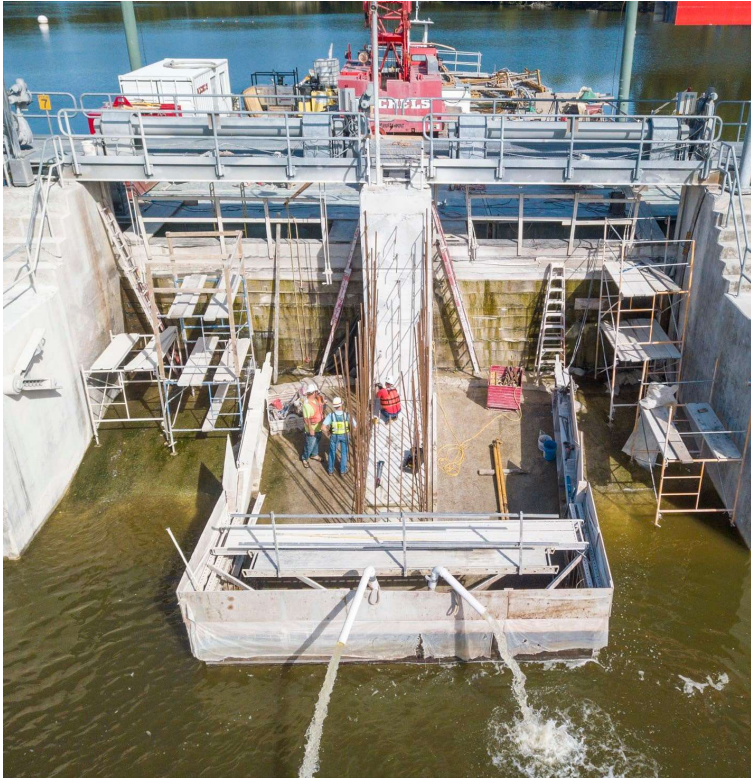
- Lunda Construction/Iowa DOT
- Connects Moline, Illinois and Bettendorf, Iowa, 3,370 feet across the Mississippi River
- 242 drilled shafts to support the piers for the new bridge
- 7-foot and 10-foot permanent steel casing

## Cat Islands - Wisconsin



- Built 4.3 miles of stone dike ranging from 4 to 8 feet high on the lake bed
- Constructed a 275-foot barge and ship mooring facility using sheets and pillings to drill into the lake bed
- Used 800,000 tons of dense base and 300,000 tons of armor stone to build the dike

# Kaukauna Dam Tainter Gate Replacement - Wisconsin

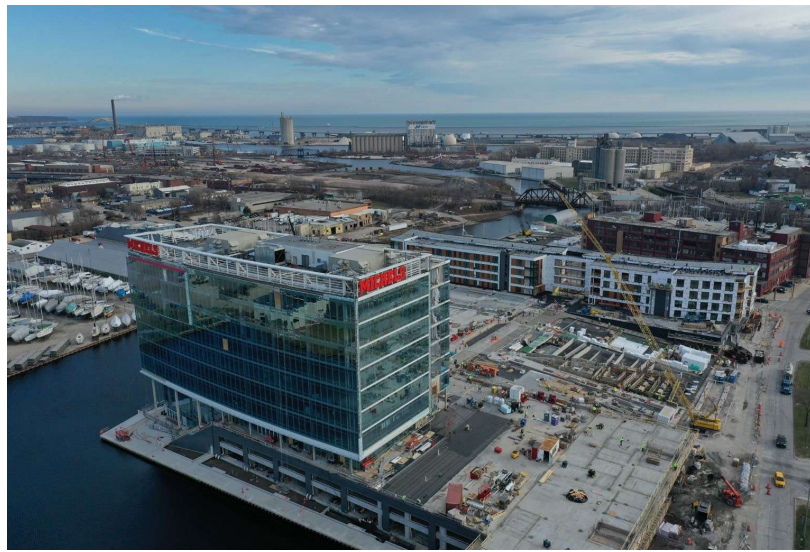
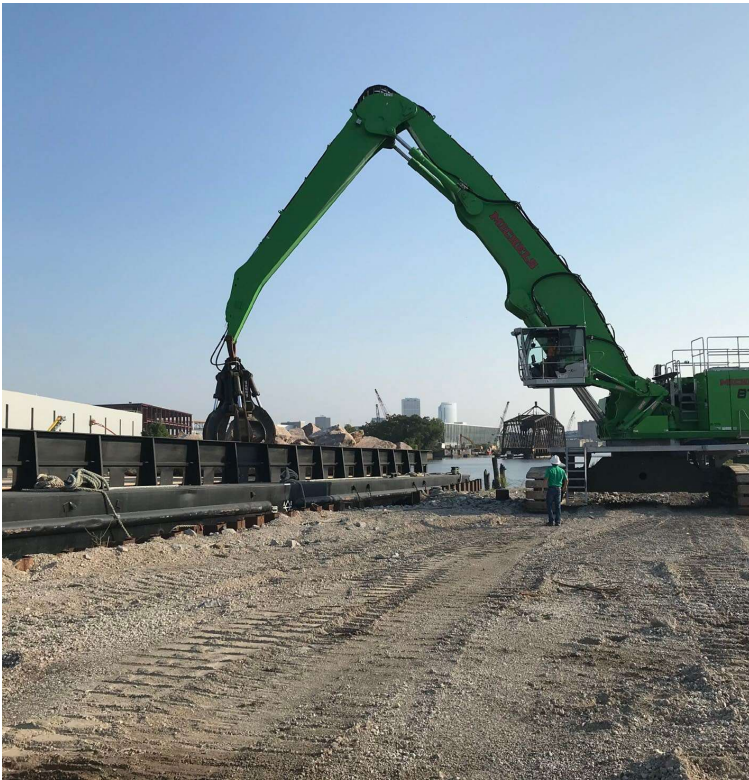


- Dam was 90 years old and severely deteriorating
- Repaired and replaced 8 tainter gates and 9 existing concrete piers that were 16 feet and 3 inches long by 5 feet wide by 15 feet tall
- Installed a cofferdam around the newly fabricated pier nosings
- Removed 8 existing tainter gates and demolished the tailwater portion of the existing piers
- Completed project from barges on the upstream side of the dam while water leveled surged to create strong currents



# Grand Trunk

- 12-acre yard
- Close proximately to R1VER
- Stone is loaded onto barges and transported



# Why Michels?



Top-down commitment to safety and quality



Engineering-design-build foundations; in-house team



Michels has offices and port access in the Milwaukee Harbor



Innovative field and management teams



Capabilities to engineer, design and fabricate custom tools for unique challenges and conditions quickly



\$1.5B bonding capacity

# Let's Connect

[www.michels.us](http://www.michels.us)

